

Top row, left to right: **Rejin Leys**, *Ailanthus and Oxalis*, watercolor & collage on paper, 2004; **LUCE**, *Les Solitaires*, etching, ed. 7/7 2002; **Karen Helga Maurstug**, *Winter Sign III*, Japanese woodcut ed. 1/5, 2012

Second row, left to right: **Peter Matthews**, *Morse Code Message to the Pacific Ocean*, pen & acrylic on paper, 2009; **Meridith McNeal**, *Facing Fear*, Flashe on NYC subway map, 2001; **Debra Pearlman**, *Pregnant (pause) II*, charcoal on paper, 1998

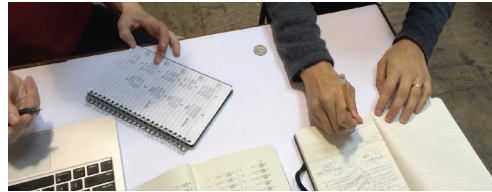
Third row, left to right: **Sepideh Salehi**, *Peace*, pencil & ink on paper, 2007; **Thomas Vinton**, *Untitled Tag Series*, collage & ink on paper tag, 2012; **Mimmo Roselli**, *Drawing Space*, pen on paper, 2005

Fourth row, left to right: **Tina Olsen**, *Red Hook Sugar Factory #3*, ink on paper, 2002; **Robert Sestok**, *Nature Boy*, etching A/P, 2003; **Terise Slotkin**, *Artist and Art (from Mixed Doubles series)*, photograph, 1994

Last row, left to right: **Claudia Sbrissa**, *Black Discs*, ink & vinyl on paper, 2011; **Dale Williams**, *Footnotes for Attis*, mixed media & collage on accordion-fold book, 1998

# Circumstances

*Selections from the Kentler Flatfiles*



Curators: **Holly Shen Chaves + Rachel Nackman**

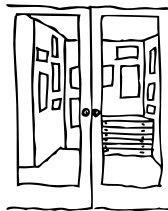
32 artists were selected using a process inspired by John Cage's employment of the *I Ching*.

**February 8 - March 23, 2014**

**Opening Reception:** Saturday, February 8, 6-8pm

**Curators' Talk:** Sunday, February 23, 4pm

Gallery Hours: Thursday – Sunday, 12 – 5pm

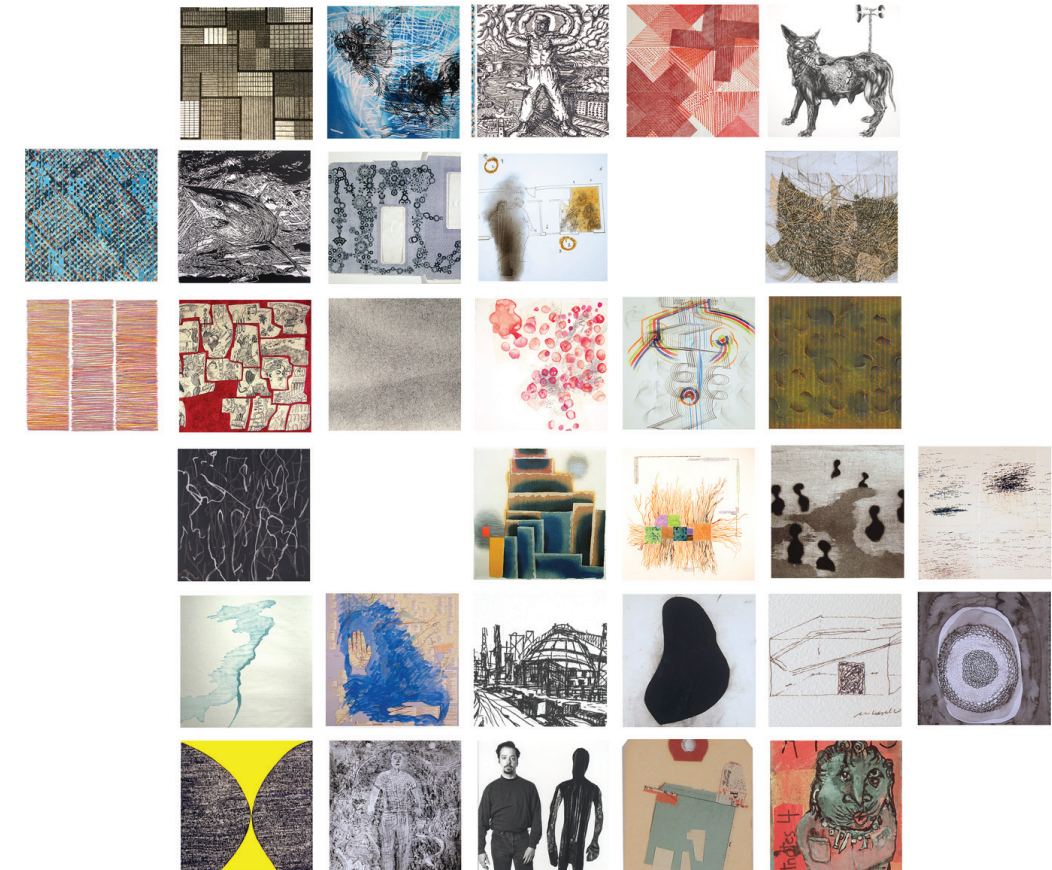


**KENTLER  
INTERNATIONAL  
DRAWING  
SPACE**

353 Van Brunt Street, (Red Hook)  
Brooklyn, New York 11231  
718.875.2098  
info@kentlergallery.org  
www.kentlergallery.org

and the New York State Legislature; The New York City Department of Cultural Affairs in partnership with the City Council. Other supporters include: the Fort Trustee Fund, CFCV; New York City Council Discretionary Award; Lily Auchincloss Foundation; Postindustrial Productions; Estate 4; The Gifford Foundation; Agnes Gund Foundation; Fifth Floor Foundation; MVS Studio Inc.; Utrecht Art Supplies; Materials for the Arts, NYC Department of Cultural Affairs/ NYC Department of Sanitation/ NYC Department of Education; and the many valued artists, friends, volunteers and supporters of the gallery. <http://www.kentlergallery.org/support.html>

Designed by riveredgedesign.net



# Circumstances

*Selections from the Kentler Flatfiles*

Curators: **Holly Shen Chaves + Rachel Nackman**

Ernst **Benkert**  
Hedwig **Brouckaert**  
Juan **Carlos**  
Beth **Caspar**  
Osvaldo Ramirez **Castillo**  
Annette **Cords**  
Aaron **Drew**  
Elizabeth **Duffy**  
Rebecca **Forster**  
Abby **Goldstein**  
Molly **Heron**

John **Himmelfarb**  
Richard **Howe**  
Nene **Humphrey**  
Dragan **Ilic**  
Tamiko **Kawata**  
Kumi **Korf**  
Karen **Kunc**  
Rejin **Leys**  
**LUCE**  
Peter **Matthews**  
Karen Helga **Maurstig**

Meridith **McNeal**  
Tina **Olsen**  
Debra **Pearlman**  
Mimmo **Roselli**  
Sepideh **Salehi**  
Claudia **Sbrissa**  
Robert **Sestok**  
Terise **Slotkin**  
Thomas **Vinton**  
Dale **Williams**

**KENTLER INTERNATIONAL DRAWING SPACE**