

PATTERNING

Selections from the Kentler Flatfiles

June 17 - July 30, 2017

Guest Curator: Samantha Friedman, Associate Curator, Department of Drawings & Prints, The Museum of Modern Art

Artists: Grace DeGennaro, Elizabeth Duffy, Alexander Gorlizki, Marietta Hoferer, Viviane Rombaldi Seppey, Taney Roniger, Donna Ruff, Sepideh Salehi

Curator's Talk & Opening Reception: Saturday, June 17, 4 - 7pm
Open to the public Thursday - Sunday, 12 - 5pm

Left panel:

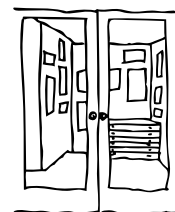
1. Alexander Gorlizki, *Downtime*, pigment and gold on paper, 15" x 22", 2014
2. Sepideh Salehi, *My Mother*, watercolor pencil on paper, 19.5" x 13.25", 2007
3. Marietta Hoferer, *A*, pencil and tape on paper, 19" x 19", 2003-2013
4. Elizabeth Duffy, *Security Envelope Collage*, graphite on security envelopes, 15.5" x 8.5", 2005-14
5. Grace DeGennaro, *Geometry 10*, watercolor on Somerset paper, 30" x 22", 2013
6. Viviane Rombaldi Seppey, *Hamilton*, hand-cut U.S. phonebooks, 22" x 22", 2011
7. Taney Roniger, *Bifurcations Series (Copper #1)*, pin pricks and metallic paint on paper, 15" x 27.5", 2014
8. Donna Ruff, *Untitled (Copper)*, copper leaf and burns on paper, 8.5" x 8.5", 2014
9. Alexander Gorlizki, *Goodbye Henry*, pigment and gold on bookprint, 11.75" x 8.5", 2017
10. Sepideh Salehi, *Peace*, watercolor pencil and sumi ink on paper, 19.5" x 13.75", 2007

Inside:

Left panel, left: Marietta Hoferer, *Small Crystal #18*, pencil and tape on paper, 21" x 21", 2008
Left panel, right: Elizabeth Duffy, *0% APR*, graphite on collaged envelope, 8.5" x 12", 2004

Center panel, left: Viviane Rombaldi Seppey, *Balok*, hand-cut Singaporean phonebooks, 22" x 22", 2011
Center panel, right: Donna Ruff, *Seam*, gold leaf and burns on paper, 12" x 9", 2014

Right panel, left: Grace DeGennaro, *Geometry 8*, watercolor on Somerset paper, 30" x 22", 2013
Right panel, right: Taney Roniger, *Bifurcations Series (Copper on White, Horizontal)*, acrylic on pin-pricked paper, 15" x 27.5", 2014



**KENTLER
INTERNATIONAL
DRAWING
SPACE**

353 Van Brunt Street, (Red Hook)
Brooklyn, New York 11231
718.875.2098
info@kentlertgallery.org
www.kentlertgallery.org

The Fort Trustee Fund, CFCV; The Thompson Family Foundation; The Lily Auchincloss Foundation; The Gifford Foundation; The Fifth Floor Foundation; Postindustrial Productions, Inc.; Movers, Not Shakers; Epson America; MVS Studio; Materials for the Arts; NYC Department of Cultural Affairs/ Department of Sanitation/Department of Education; the many valued artists, friends & supporters of the gallery. Special thanks for pro-bono legal advice: Lawyers Alliance for New York. <http://www.kentlertgallery.org/news/index.php/supporters/>

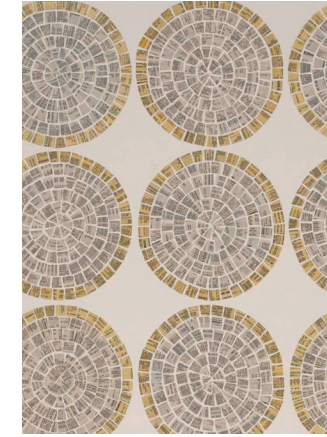
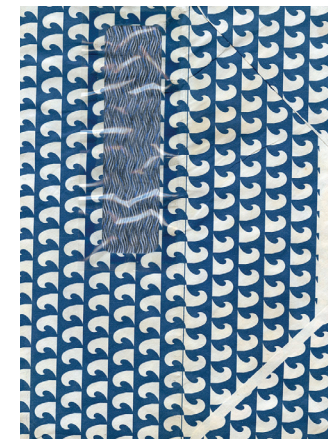
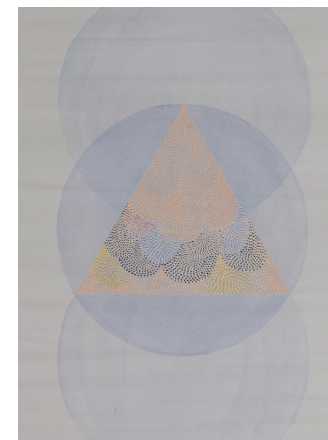
Designed by riverredgedesign.net



Council on
the Arts



Lily Auchincloss Foundation, Inc.



Selections from the Kentler Flatfiles

KENTLER INTERNATIONAL DRAWING SPACE