

Top left: **Yasu Shibata**, *Kirishima*, Mokuhanga, ed. 5/16, 14 x 14" each, 2013

Top right: **Takuji Hamanaka**, *Simmering*, Mokuhanga, gampi collage, 28 x 22", 2010

Bottom right: **April Vollmer**, *Delirious Birds and Bees*, Mokuhanga, ed. 2/16, 26 x 26", 2007

NEW YORK MOKUHANGA

Water-based Woodblock Prints

November 7 - December 14, 2014

Opening Reception: Friday, November 7, 6 - 8 pm
Curator & Artists' Talk: Sunday, December 7, 4 pm

Mokuhanga Demonstration with April Vollmer:
Sunday, November 16, 4 pm

Inside left panel:
Left: **Takuji Hamanaka**, *Repeat After Me – Morning Column*, Mokuhanga collage mounted on museum board, 29 x 24", 2011
Right: **Yasu Shibata**, *PC3F*, Mokuhanga, ed. 5/9, 12 x 14.5" each, 2013

Inside center panel:
April Vollmer, *Attractor*, Mokuhanga, ed. 12/25, 17.5 x 16.5", 2006

Inside right panel:
Top: **Ursula Schneider**, *Channing River*, Mokuhanga, ed. 9/30, 13 x 38", 1999
Bottom: **Ursula Schneider**, *Tomkins Cove*, Mokuhanga, ed. 5/20, 5 x 40", 2012



**KENTLER
INTERNATIONAL
DRAWING
SPACE**

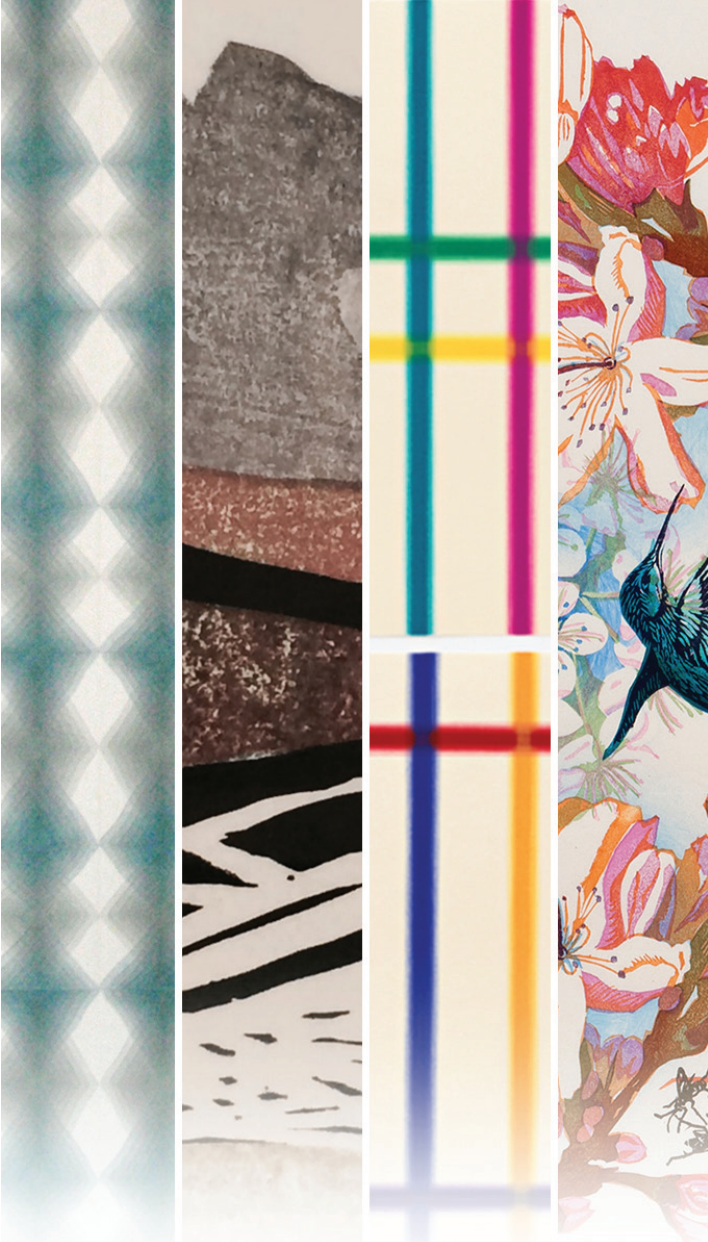
353 Van Brunt Street, (Red Hook)
Brooklyn, New York 11231
718.875.2098
info@kentlergallery.org
www.kentlergallery.org

Kentler International Drawing Space, founded by two artists in 1990, is a nonprofit organization dedicated to bringing contemporary drawings and works on paper by emerging and underrecognized national and international artists to the public, and to providing the opportunity to experiment, explore and expand the definition of art in society. Kentler programs: Exhibitions & Events; the Kentler Flatfiles; K.I.D.S. Art Education.

Kentler International Drawing Space, Inc. is a 501(c)(3) nonprofit organization. Exhibitions, events and public programs are made possible in part, with public funds from: The New York State Council on the Arts with the support of Governor Andrew Cuomo

and the New York State Legislature; The New York City Department of Cultural Affairs in partnership with the City Council. Other supporters include: The Fort Trustee Fund, CFCV; Lily Auchincloss Foundation; The Thompson Family Foundation; The Athena Foundation; The Gifford Foundation: Estate4; Postindustrial Productions Inc.; MVS Studio Inc.; Movers Not Shakers; Epson America Inc.; Utrecht Art Supplies; Materials for the Arts, NYC Department of Cultural Affairs /NYC Department of Sanitation/ NYC Department of Education and the many valued artists, friends & supporters of the gallery. <http://www.kentlergallery.org/support.html>

Designed by riveredgedesign.net



**NEW YORK
MOKUHANGA**

CURATOR
Florence Neal

ARTISTS
Takuji Hamanaka
Ursula Schneider
Yasu Shibata
April Vollmer

**November 7
– December 14, 2014**

KENTLER INTERNATIONAL DRAWING SPACE