

KENTLER INTERNATIONAL DRAWING SPACE

Viviane Rombaldi Seppey

A Sense of Place

September 12 – October 26, 2014



The World Isn't Flat

World map

2013



The Day Before

Hand-cut maps on paper

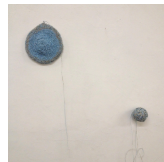
2012



Gathering

Atlas book pages

2014



In the Making

Hand-cut map

2014



Watching You

Hand-cut maps, atlas, ink, Gray's Anatomy book page

2013



Non Ti Vedo

Hand-cut atlas, maps, Gray's Anatomy book page

2013



The Tooth Fairy

Hand-cut atlas, map, Gray's Anatomy book page

2014



The New World

Hand-cut atlas, map, Gray's Anatomy book page

2014



Nurture

Hand-cut atlas, map, anatomical print
2013



Un Monde en Soi

Hand-cut maps
2013 – 2014
(See attached list for individual pieces)



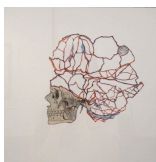
My Father Was a Builder

11 pencil drawings, 1 Perspex box, one world map cut into 562 bricks
2012



Earth Beat

Hand-cut maps on paper
2010



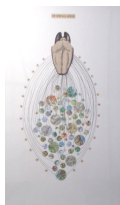
The Call of the Land

Hand-cut atlas, maps, Gray's Anatomy book page
2013



Wait and See

Hand-cut atlas, map, Gray's Anatomy book page
2013



Mother Tongue

Hand-cut atlas, maps, ink, Gray's Anatomy book page
2012



One Step Into the Sky

Hand-cut atlas, maps, Gray's Anatomy book page
2013



It was in the Stars

Hand-cut atlas, maps, Gray's Anatomy book page
2014

Viviane Rombaldi Seppey
Un Monde en Soi



Individual Vessels:

Roma (Italy)

Marina (Italy)

Coings (France)

Plage (France)

Mado (Kenya)

Ana (Spain)

(France)

Fruttuoso (Italy)

Old Head (Ireland)

Pre du Creux (Suisse)

(France)

The World

Taita (Kenya)

Roma (Italy)